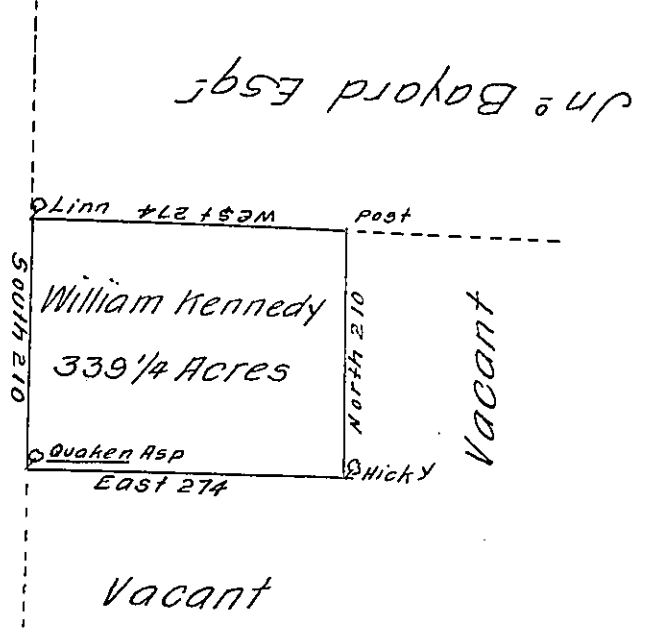


The line of District No. 6 J. Potter, Esq. D.S.



A Draught of a Tract of Land situate on the waters of Stump Creek or Punksuctaning adjoining the line of District No. 6 near the 20<sup>th</sup> mile Tree, North of the west branch of Susquehanna in the County of Northumberland Containing Three hundred and thirty nine Acres <sup>1</sup>/<sub>4</sub> and allowance of six acres per Cent. Surveyed the 29<sup>th</sup> day of July 1785 for William Kennedy in pursuance of a Warrant No. 426 bearing date the 17<sup>th</sup> day of May 1785.

To John Lukens Esq. }  
 Surveyor General } # Richard Sherer - D.S.

IN TESTIMONY that the above is a copy of the original remaining on file in the Department of Internal Affairs of Pennsylvania, made conformably to an Act of Assembly approved the 16th day of February, 1833, I have hereunto set my Hand and caused the Seal of said Department to be affixed at Harrisburg, this twenty sixth day of September 1910.

*Henry Houck*  
 Secretary of Internal Affairs.